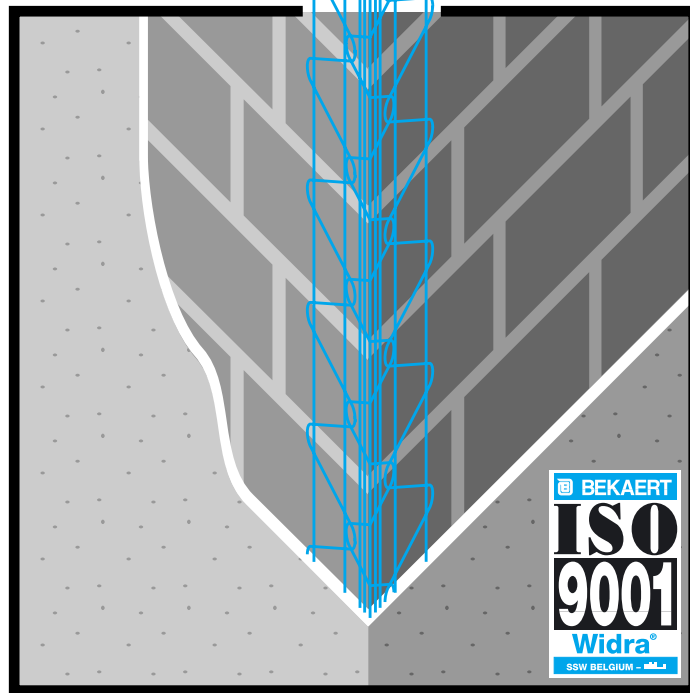


# Widra®

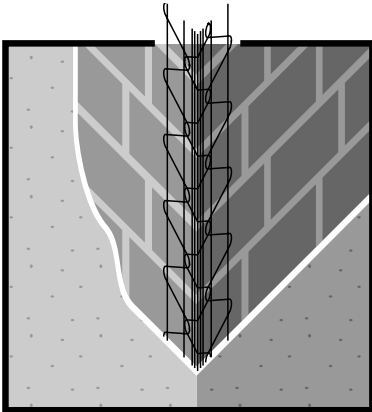


## Corner Beads

**Widra®**

THE CONSTRUCTIVE IDEA

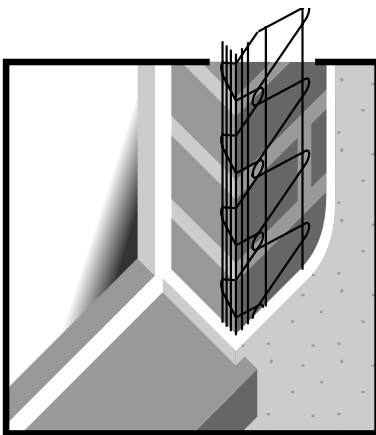
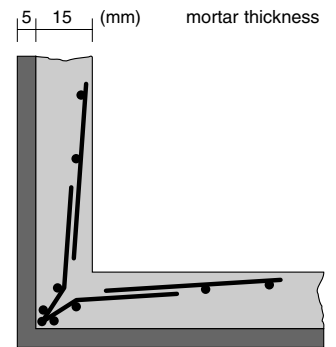
## Different types of Widra®: Profiles for rendering outside walls



### AP Widra®

Wire-bead for reinforcing external corners prior to rendering.

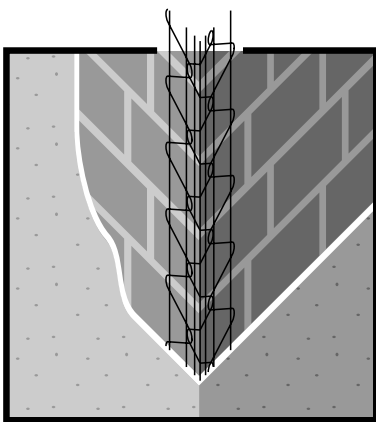
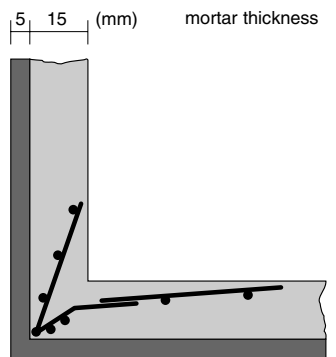
Available : galvanized



### APA Widra®

For window and door openings in outside walls.

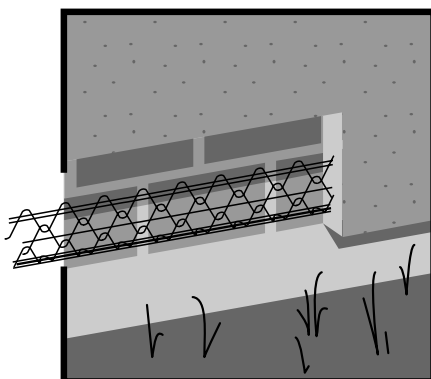
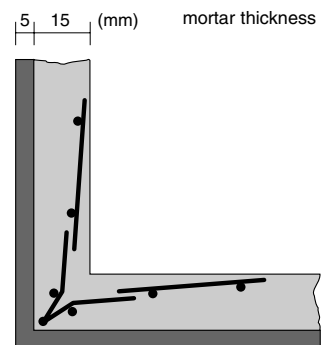
Available : galvanized



### APS/APE Widra®

Wire beads for reinforcing external corners prior to rendering. The removal of 2 nose wires ensures that even renders with coarser aggregates can fully "key" behind the bead wires.

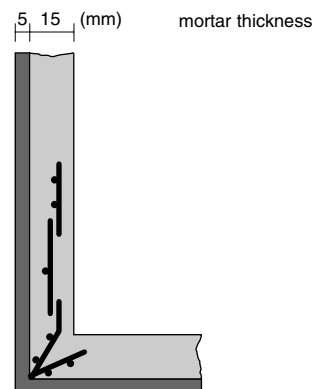
Available : galvanized (APS)  
stainless steel (APE)

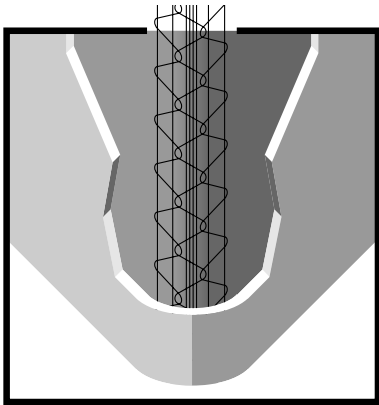


### SAA Widra®

Wire beads for reinforcing external walls bases prior to rendering. Can be used in conjunction with AP beads to offer a complete render bead system.

Available : galvanized

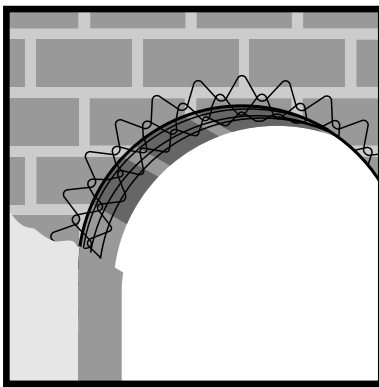
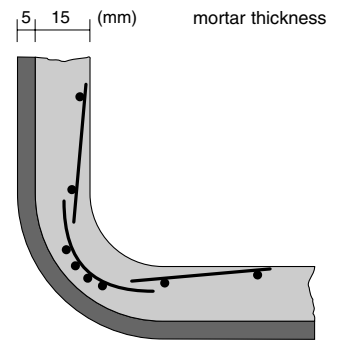




# APR Widra®

The profile to form perfectly finished round corners.

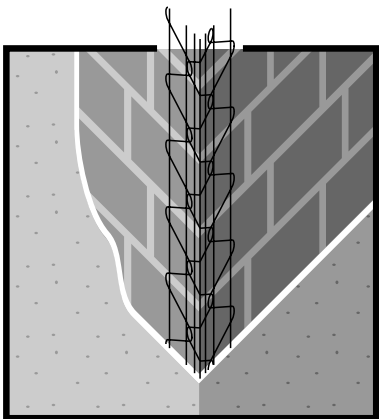
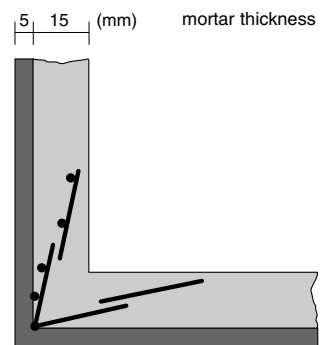
Available : galvanized



# APB Widra®

Assures perfectly shaped arched constructions.

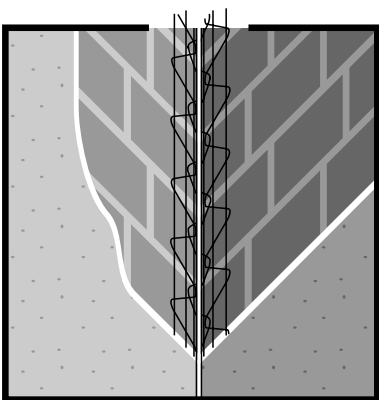
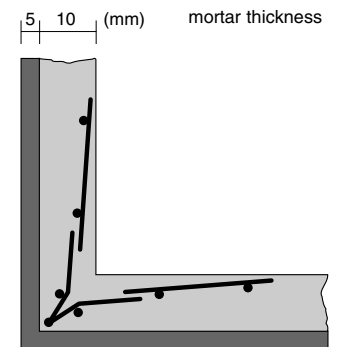
Available : galvanized



# APSW Widra®

Ideal corner-bead for single-coat mortar appropriate to isolate outside walls.

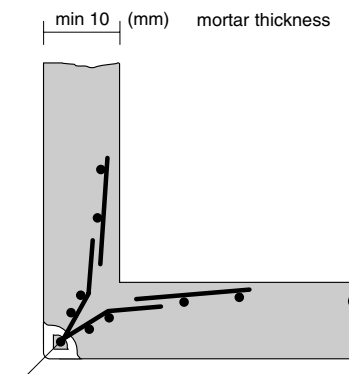
Available : galvanized



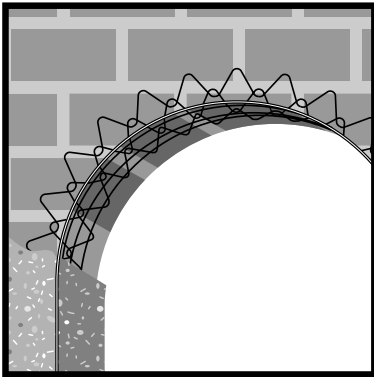
# APK Widra®

Wire beads for reinforcing external corners prior to rendering. The PVC-nosing provides improved visual appearance.

Available: galvanized with PVC-nosing  
Colours: White - 2011  
Beige - 2014  
Grey - 2007



(\*)  white - 2011  beige - 2014  grey - 2007

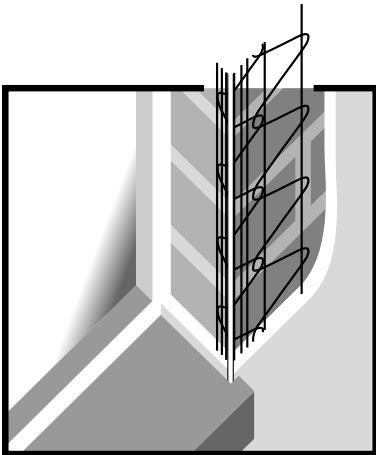
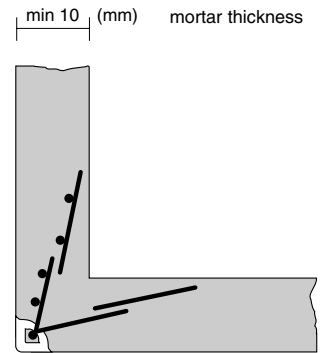


# APBK

## Widra®

Corner-bead with PVC-nose to build with arched constructions.

Available: galvanized with PVC-nosing  
 Colours: White - 2011  
 Beige - 2014  
 Grey - 2007

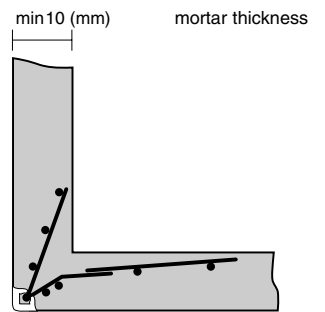


# APAK

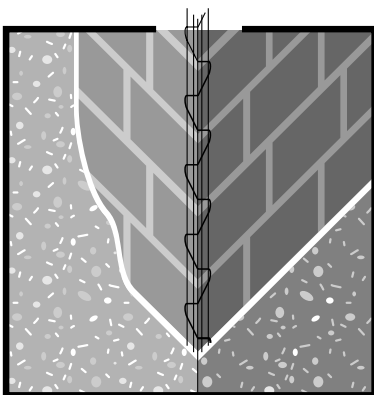
## Widra®

Asymmetric profile with PVC-nose appropriate for outside wall applications around doors and windows.

Available: galvanized with PVC-nosing  
 Colours: White - 2011  
 Beige - 2014  
 Grey - 2007



## Profiles for inside plastering

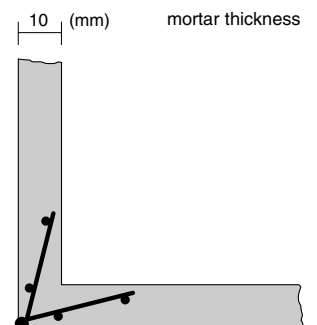


# IP/IPE

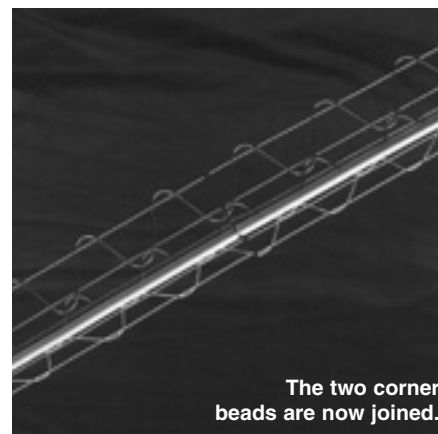
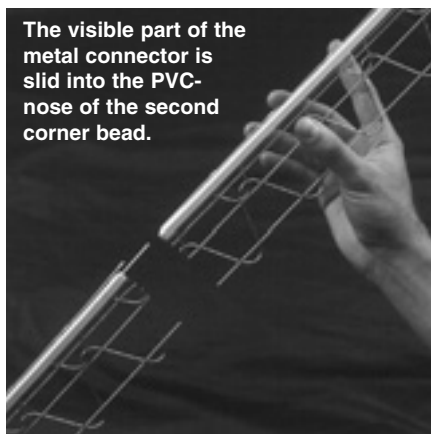
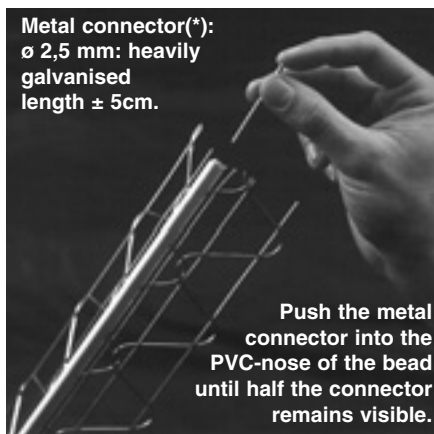
## Widra®

Wire bead for reinforcing internal corners prior to plastering. The beads have a high integral strength but are sufficiently flexible to be formed to meet most normal design profiles.

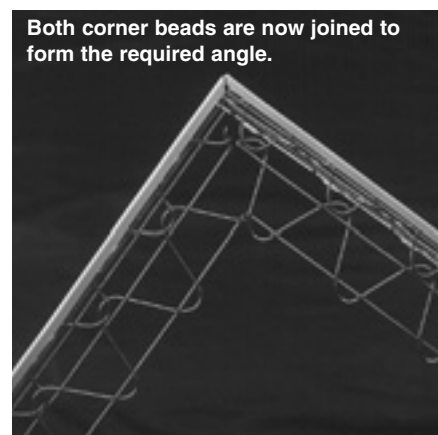
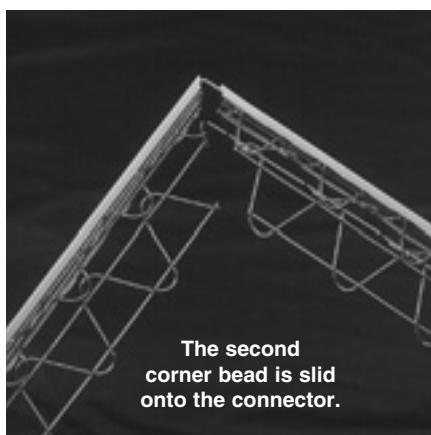
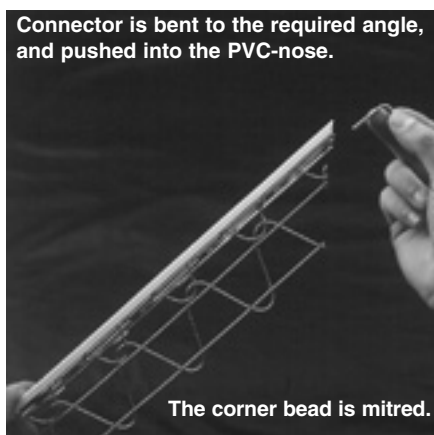
Available: galvanized (IP)  
 stainless steel (IPE)



## How to connect Widra types APK or APBK



## How to form a corner with Widra APK and APBK



\* Available from your dealer

## Technical information on corner beads

	Length/Element	All Wires		Packaging	
		$\varnothing$ (mm)	Zinc min. (gr/m <sup>2</sup> )	Pc/box	m/box
AP	2.95	1.40	200	40	118
APA	2.95	1.40	200	40	118
APS APE	2.95	1.40	200	40	118
SAA	2.95	1.40	—	25	73.75
APR	2.95	—	—	40	118
APB	2.95	1.40	200	40	118
APSW	2.95	1.40	200	40	118
APK	2.95	1.40 + PVC nose	200	25	73.75
APBK	2.95	1.40 + PVC nose	200	25	73.75
APAK	2.95	1.40 + PVC nose	200	25	73.75
IP	2.50 2.95	3.00	270	40 40	100 118
IPE	2.95	1.95	270	40	118

## Advantages of Widra®

- 1** Widra® requires no fixing batons, so allows quick and accurate finishing at corners  
Widra®
- 2** Widra® can be easily fixed into position using either render/plaster.  
Widra® When fixing Widra® with staples, use the appropriate finish e.g. galvanised or stainless steel quality.
- 3** Widra® open steel wire construction allows render/mortar to fully key behind the beads.  
Widra®
- 4** Widra® provides strong reinforcement for exposed corners.  
Widra®
- 5** Widra® is manufactured from heavily galvanised steel wire for excellent corrosion resistance.  
Widra® For industrial or marine environment stainless steel Widra® corner beads should be applied.

## Application

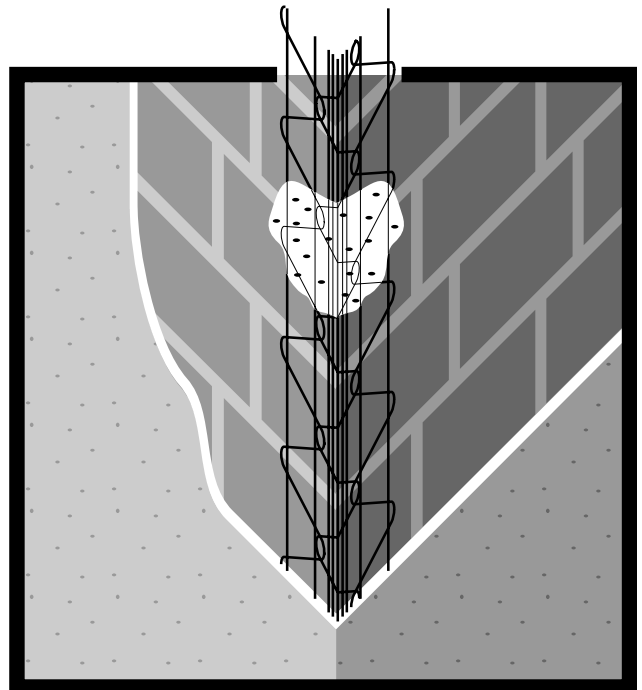
### External walls:

Widra® may be simply fixed into the correct position using either mineral render/plaster or staples. When using a synthetic top coat, stainless steel beads should be used and the top coat should be able to breathe.

«When using and fixing the Widra®, please follow the recommendations from your render supplier».

### Internal walls:

Widra® may be simply fixed into the correct position using plaster.



## Information

**Bekaert Building Products Ltd**  
P.O. Box 119  
Shepcote Lane  
GB - Sheffield S9 1 TY  
Tel: (0)114/256 15 61  
Fax: (0)114/261 15 29

**For other countries:**  
**NV Bekaert SA**  
Bekaertstraat 2  
B-8550 Zwevegem  
Belgium  
Tel: (0)56/76 69 86  
Fax: (0)56/76 79 47

**Internet:** <http://www.bekaert.com/building>

